

## Sonata for pumps and bags | Techrider

### General information

- Participants: 1x performer, 1x lighting technician, 1x sound technician
- Length of the performance: 40 minutes
- Further information: <https://maren-strack.de/performances/sonate-fuer-pumpen-und-tueten/>

### Stage and props

- Playing area: 6m x 4m (width x depth)
- 2 x 230 V connection on stage

### Sound

- 2 active speakers left and right on stage + cabling (XLR) to stagebox (stagebox will be brought along. Active speakers can also be brought along if necessary)
- Cabling from stagebox to tech desk (XLR)

### Lighting

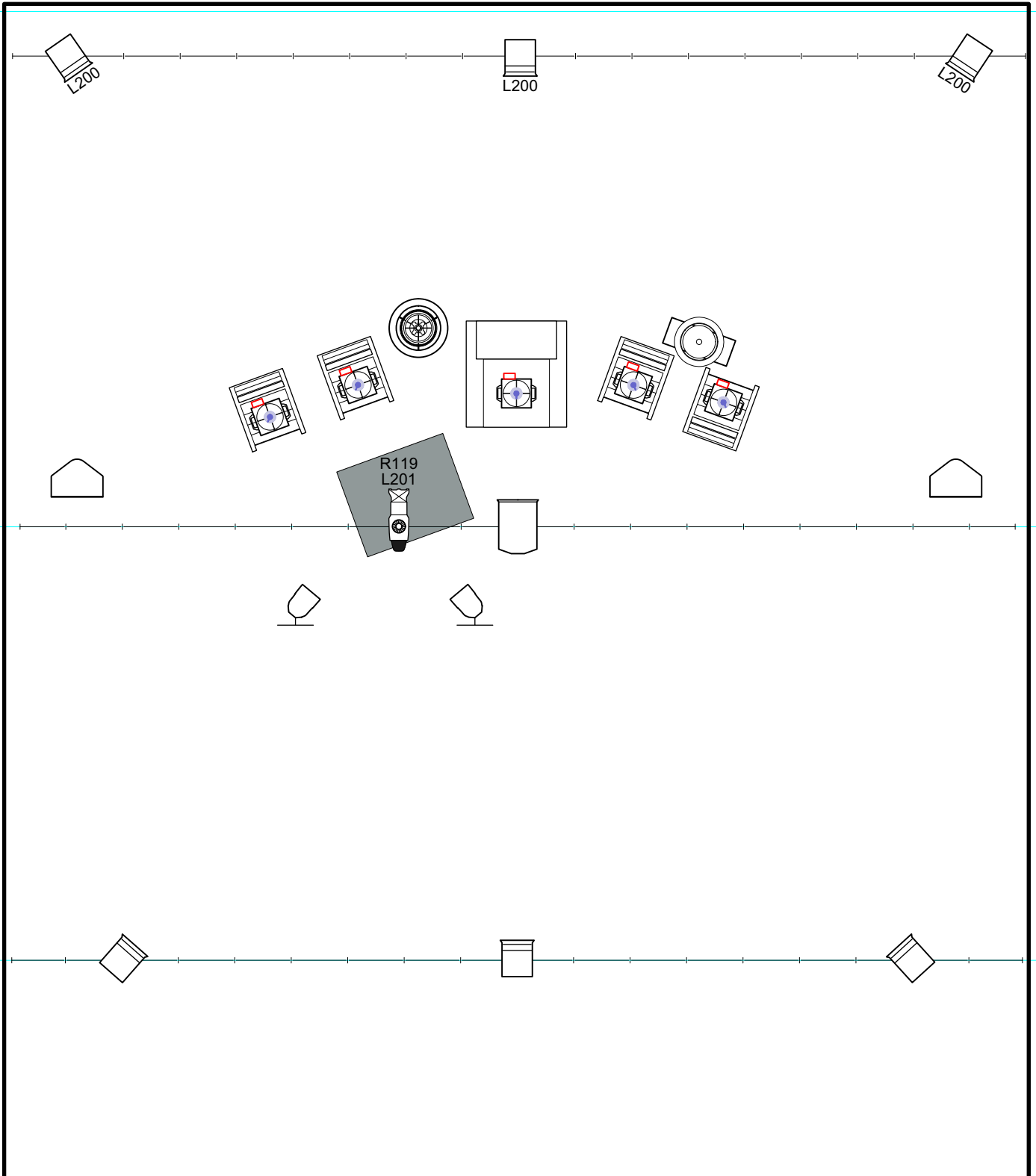
See extra plan. The lighting can be adapted depending on the venue and situation

### Personnel requirements




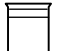
- One technician for set-up and dismantling light & sound



Stage Installation



### Symbol Key

|   |                                     |   |
|---|-------------------------------------|---|
|  | Light Instr Astera AX10             | 2 |
|  | Light Instr ETC Source 4 19deg 750W | 1 |
|  | PC 2k                               | 1 |
|  | PC 1k                               | 6 |

|  |              |                                     |  |
|--|--------------|-------------------------------------|--|
| Show Name<br><b>Sonate für Tüten und Pumpen</b>                          |              | Company Name<br><b>Maren Strack</b> |  |
| Venue  | Project Date | Scale                               |  |
| Designed by Fabian Bleisch / fbleisch@gmx.de / Mobil: +49 1577 780 34 25 |              |                                     |  |